

## Boardmembers

### Governor's Appointments

Mike Chrisman	Chair, Secretary for Resources
Tom Sheehy	Department of Finance
Bob Kirkwood	Public Member
B. J. Kirwan	Public Member
Vacant	Public Member

### Legislative Appointments

Bob Johnston	Senate Rules Committee Appointee
John Brissenden	Speaker of the Assembly Appointee

### Local Government Appointments

Brian Dahle	North Subregion Lassen County Supervisor
Kim Yamaguchi	North Central Subregion Butte County Supervisor
Hal Stocker	Central Subregion Yuba County Supervisor
Donald Jardine	East Subregion Alpine County Supervisor
Steve Wilensky	Vice Chair, South Central Subregion Calaveras County Supervisor
Jon McQuiston	South Subregion Kern County Supervisor

### Non-Voting Liaison Advisors

Kathy Hardy	Bureau of Land Management
Beth Pendleton	U.S. Forest Service
David Graber Ph.D.	National Park Service

### Board Staff

Jim Branham	Executive Officer
Joan Keegan	Assistant Executive Officer
Theresa Burgess	Board Liaison

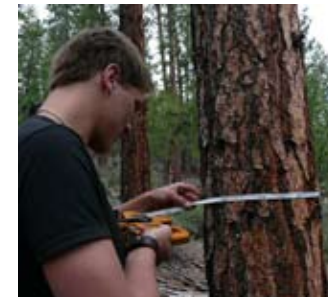
### For More Information

Toll-Free	877.257.1212
Telephone	530.823.4670
Internet	<a href="http://www.sierranevada.ca.gov">www.sierranevada.ca.gov</a>
E-mail	<a href="mailto:geninfo@sierranevada.ca.gov">geninfo@sierranevada.ca.gov</a>



Pee Wee Lake, High Sierra ©www.ElizabethCarmel.com

# SIERRA NEVADA CONSERVANCY



Youth Education, Martis Valley



Barn in Placer County ©www.WayneCarrollPhotography.com



California Rangeland Trust



Ansel Adams Wilderness



McArthur-Burney Falls Memorial State Park

### Mission...

The Sierra Nevada Conservancy initiates, encourages, and supports efforts that improve the environmental, economic and social well-being of the Sierra Nevada Region, its communities and the citizens of California.



Convict Lake, Mono County

### Vision...

The magnificent Sierra Nevada Region enjoys outstanding environmental, economic and social health with vibrant communities and landscapes sustained for future generations.



Marmot, Ansel Adams Wilderness

### Introduction

The Sierra Nevada Conservancy (SNC or Conservancy) is a State agency within the Resources Agency created by bipartisan legislation, co-authored by Assemblymembers John Laird and Tim Leslie, and signed into law by Governor Arnold Schwarzenegger in September 2004. It was created with the understanding that the environmental, economic and social well-being of the SNC Region (Region) and its communities are closely linked and that the Region would benefit from an organization providing a strategic direction. The SNC is charged with a broad mission to be accomplished through a variety of activities in collaboration and cooperation with various partners.



Modoc Line, Modoc County

### Sierra Nevada Facts

One of the most significant natural and biologically diverse regions in the world, the Region constitutes about 25 percent of California's land area, nearly 25 million acres.

The Region:

- ◆ Provides nearly two-thirds of California's most valuable commodity—water, the vast majority of which is used for residential, agricultural and environmental uses outside of the Region.
- ◆ Supports 212 communities with more than 600,000 residents, dependent upon natural resources for jobs, recreation, and community character.
- ◆ Sustains a growing tourism industry involving more than 50 million recreation visit days a year.
- ◆ Provides habitat for 66 percent of the bird and mammal species and about 50 percent of the reptile and amphibian species found in California.
- ◆ Produces from 33 to 50 percent of the State's annual timber supply.

### Program Goals

The statute creating the SNC provides the organization with seven program goals. The SNC's Strategic Plan identifies a set of actions which serve as the foundation for development of specific strategies, approaches and projects designed to achieve these goals. The SNC will ensure that strategies and actions are integrated across program areas. The goals as listed in the statute (and do not reflect a priority order) are as follows:

- ◆ Provide increased opportunities for tourism and recreation.
- ◆ Protect, conserve, and restore the Region's physical, cultural, archaeological, historical, and living resources.
- ◆ Aid in the preservation of working landscapes.
- ◆ Reduce the risk of natural disasters, such as wildfires.
- ◆ Protect and improve water and air quality.
- ◆ Assist the regional economy through the operation of the Conservancy's program.
- ◆ Undertake efforts to enhance public use and enjoyment of lands owned by the public.



Foothill Farmers Market ©www.WaydeCarrollPhotography.com

### Guiding Principles

The SNC has developed guiding principles that serve to guide its operations now and into the future. The full set of principles, which can be found in its strategic plan, include the following objectives:

- ◆ Ensure open, transparent and neutral processes that provide an opportunity for all to participate;
- ◆ Cooperate and collaborate with a variety of local governments, state, tribal and federal agencies and non-governmental organizations;
- ◆ Encourage and support community based efforts, adding value by providing funding and other assistance;
- ◆ Support and implement multi-benefit activities that result in integrated environmental, economic and social benefits;
- ◆ Communicate the importance of the Region and its benefits to the citizens of California.



Fuels Reduction, Calaveras County

### Grant Funding

Funding for the implementation of the Conservancy's programs is primarily provided by bond funds (Proposition 84, November 2006). The SNC has been allocated \$54 million for grant distribution and awards grants to eligible entities' projects that are consistent with its mission and funding sources.

In fiscal year 2007–08 the SNC awarded nearly \$17 million in grants throughout the Region. Projects included preserving important natural places, watershed and habitat restoration, protecting working ranches, reducing the risk of fire and supporting important planning, assessments and educational efforts.

Detailed information about eligibility and how to apply can be found on the SNC Web site at [www.sierranevada.ca.gov](http://www.sierranevada.ca.gov).